

MOTION QUICK REFERENCE GUIDE

Motor LED flashes red

Battery needs charging

Blind does not work

Click link below

[Blind does not work. Roller CM-03/CM-05 \(motion-blinds.com\)](http://motion-blinds.com)

Blind is not charging

Charger is not plugged in or does not work.

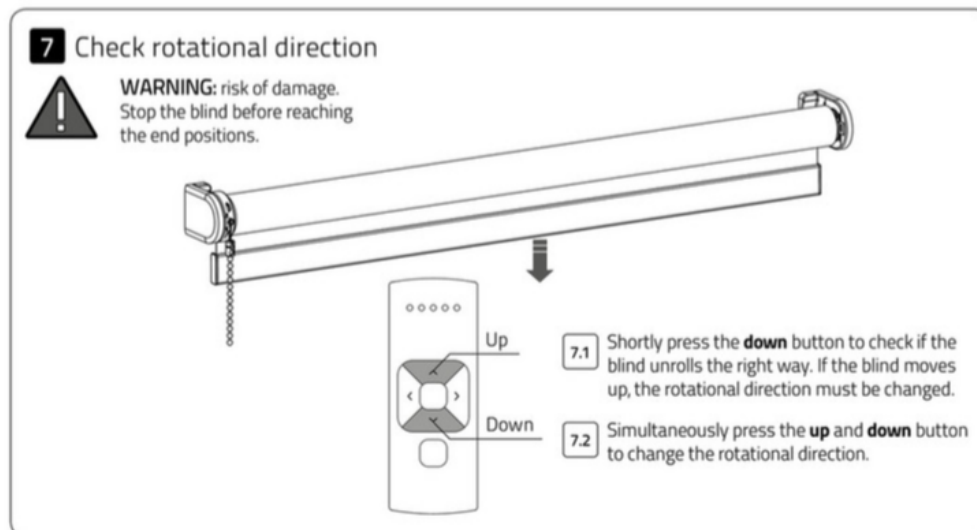
Try a different charger or make sure the charger is plugged in the outlet

The blind keeps moving up and down

The blind is in program mode.

Press the program button on the motor to exit program mode.

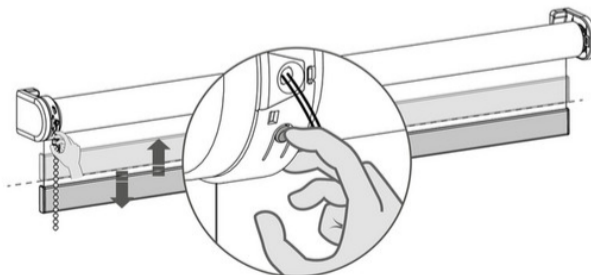
Blind moves in the opposite direction



Blind moves in small steps

17 Deactivate direct control

i When pressing the up or down button on the remote control, the blind directly moves to its end positions (direct control). To operate the blind with smaller steps using the up and down button, direct control can be deactivated. Now, the blind only directly moves to its end positions when the up or down button is held longer than two seconds.



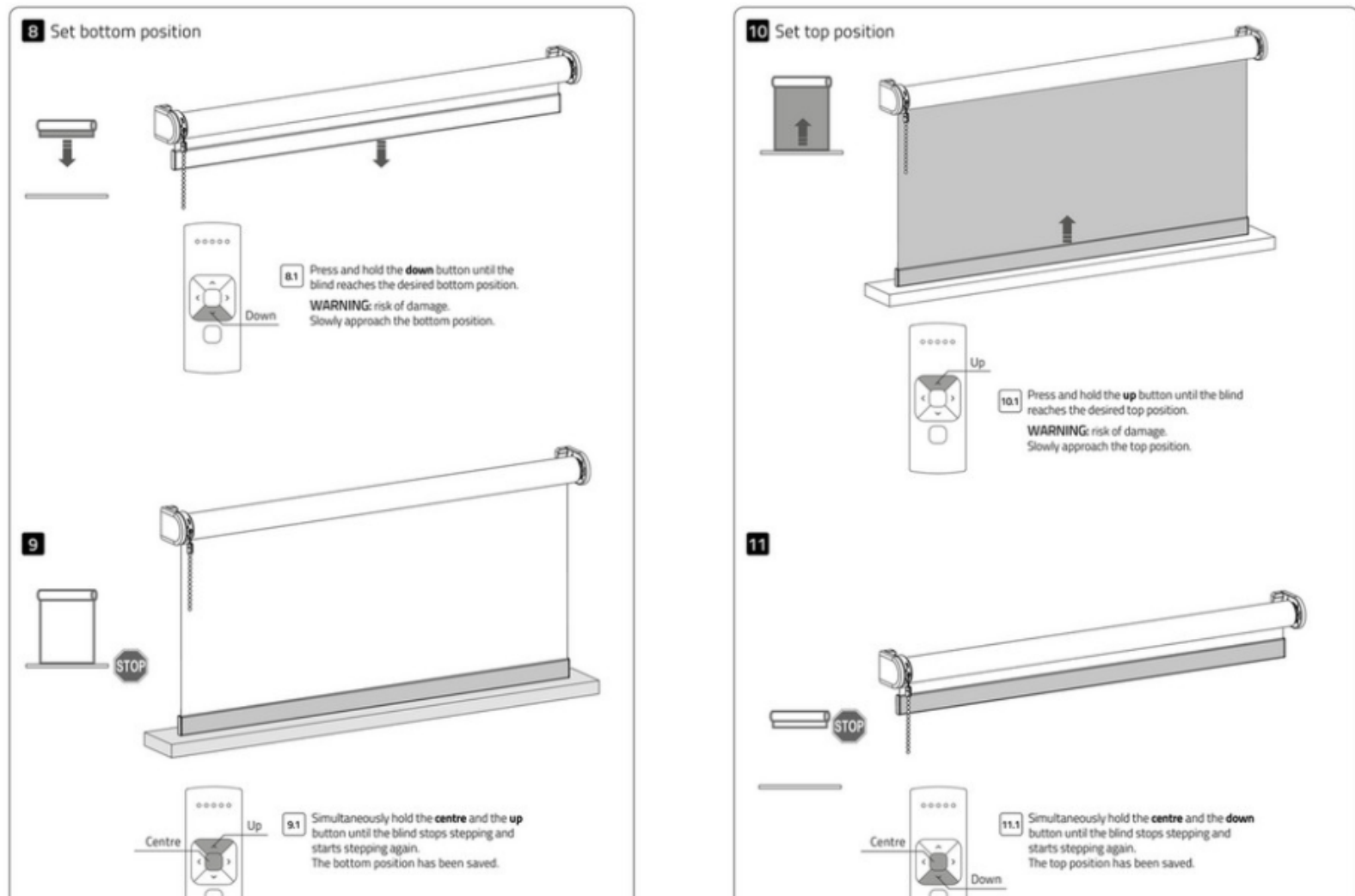
17.1 Press the **program** button on the motor to activate program mode. The blind starts stepping.

17.2 Hold the **program** button until the blind stops stepping (approximately 5 seconds) to deactivate or reactivate direct control.

Multiple blinds respond to a remote. (Unable to program a single blind)

Multiple blinds are paired with a single channel. Pair the blind with a free channel to program or use single select to program the blind.

Setting bottom and top limits



5 Channel Remote Instructions

[Motion-blinds - Manual User MOTION CM-12_842 - Page 1 \(publitas.com\)](#)

15 Channel Remote Instructions

[Motion-blinds - Manual User MOTION CM-13_842 - Page 1 \(publitas.com\)](#)

Connecting to Google assistant

[Connect MOTION with Google Assistant \(motion-blinds.com\)](#)

Connecting to Alexa

[Connect MOTION with Amazon Alexa \(motion-blinds.com\)](#)

Videos to send to customers if needed

How to program and operate the blind

[Illumin8 Motion - Setting up your blind - Pull + Remote - YouTube](#)

How the Wi-fi Bridge works

[Illumin8 Motion - App Control and Wi-fi Bridge - YouTube](#)

MOTION control options

[illumin8 MOTION - Controls Options - YouTube](#)

MOTOR INSTRUCTION MANUAL (Blinds 65cm +)

[Motion-blinds - Manual User MOTION CM-03-05 - Page 1 \(publitas.com\)](#)

MOTOR INSTRUCTIONAL MANUAL (Blinds between 45cm – 65cm)

[Motion-blinds - Manual User MOTION CMD-02 - Page 1 \(publitas.com\)](#)

Key notes they may come up

- Only one account can be used per motion bridge, If another account connects to bridge the original account will be kicked off.
To use the Motion app on multiple phones simply log in to the motion account on both devices.
- Any blind under 65cm will not have the PULL function